

Bilistick® System

Bilirubin test from a drop of whole blood

Measuring what needs to be measured

Distributed by:

 burke&burke

Burke & Burke S.p.A.
Via Einstein 32, 20090 Assago MI
tel. 02.36570100
fax 02.45704245
www.burkeburke.com
burke@bilimetrix.net

bilimetrix
RESEARCH AND INNOVATION

www.bilimetrix.net

Measuring what needs to be measured



The Bilistick® System is a bilirubin assay able to provide early diagnosis of hyperbilirubinemia by measuring total serum bilirubin concentration. It is composed by the Bilistick® Reader, a portable rechargeable battery reflectance reader, Bilistick® Test Strips, test strips with a cell-plasma separator coupled with a nitrocellulose membrane, both encased in a plastic cassette; and Bilistick® Sample Transfer Pipettes, used for loading the appropriate volume of blood on the test strip. The test requires collection of a small blood sample directly from a heel stick or a test tube, by using a Sample Transfer Pipette, and its application on a Test Strip once it was already inserted in the Reader.

Bilistick® System benefits



Portable and usable everywhere, afterwards a short training



Minimally invasive, requiring only one whole blood drop



Does not need the use of reagents and results are immediate



Comparable to laboratory exams, diagnose immediately the hyperbilirubinemia



Able to measure in blood samples with wide range of PCV



Applicable to newborn babies of all ethnicities, before, during and after phototherapy

Bilistick® Reader Maintenance products



Bilistick® Calibration Kit

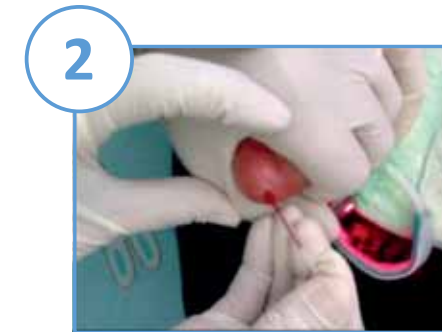


Bilistick® Cleaning Kit

Simple Steps for trustable results



1 Insert Bilistick® Strip



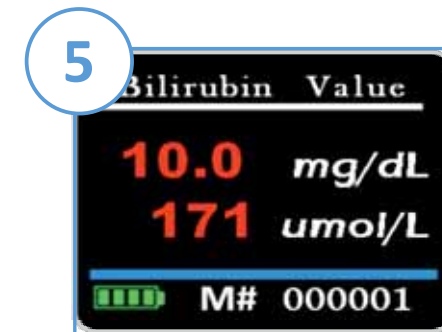
2 Collect blood sample



3 Load sample



4 Press M key and wait for result



5 Check bilirubin concentration in the display



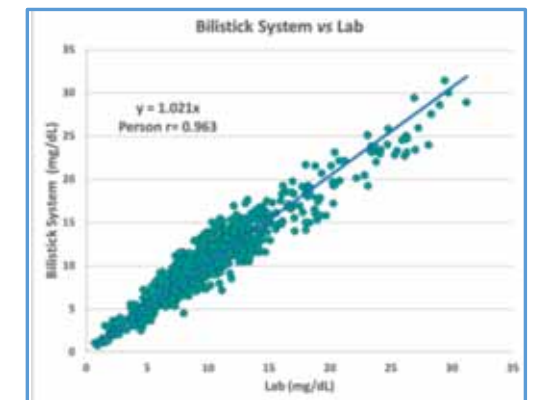
6 Check the Bilistick® Test Strip

Because precision matters...

The Bilistick® System has been extensively validate both in Western Countries as well as in Low and Middle Income Countries, covering different enviroments and condition in which it can beused around the world.

By comparing Bilistick® bilirubin results with classic methodologies routinely used in high quality laboratories of hospitals, it has been demonstrated an excellent correlation of bilirubin results.

Several studies supports the use of Bilistick® System for routine Total Serum Bilirubin screening. It may facilitate early identification of newborns requiring phototherapy treatment thus contributing to substantial reduction of the prevalence of ABE/kernicterus in LMICs.



REFERENCES:

- Neonatology (2013) 103:176-180 - "Bilistick: A Low-Cost Point-of-Care System to Measure Total Plasma Bilirubin"
- Journal of Perinatology (2017) 00,1-4- "Comparison between Bilistick System and transcutaneous bilirubin in assessing total bilirubin serum concentration jaundiced newborns"
- EClinicalMedicine 1 (2018) 14-20 - "Diagnostic Performance Analysis of the Point-of-Care Bilistick System in Identifying Severe Neonatal Hyperbilirubinemia by a Multi-Country Approach"